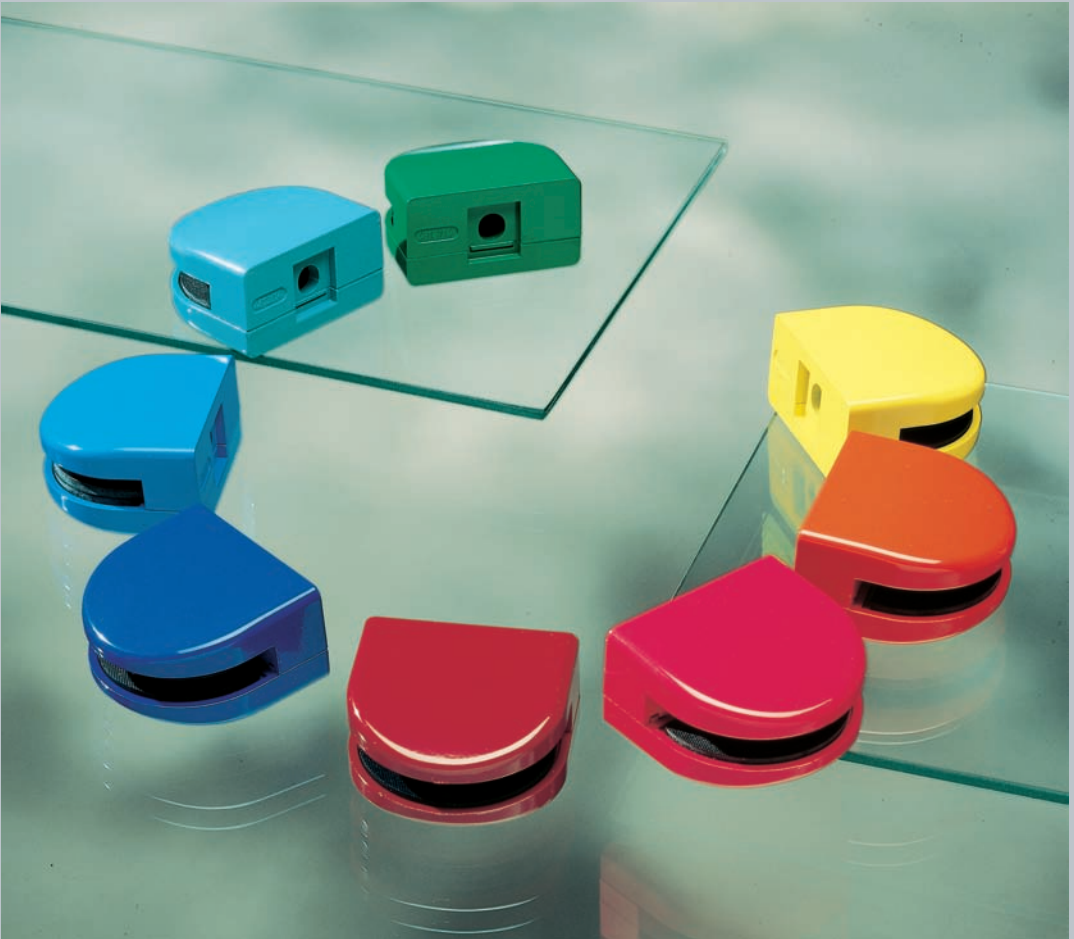


Farbenkarte/ *colours*

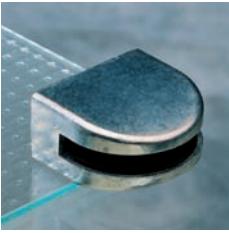


Welche Farbe hätten Sie gern? Wir stellen uns flexibel auf Ihre besonderen Wünsche ein und realisieren diese in kürzester Zeit, auch in großen Stückzahlen. Die zeitgemäße Beschichtungstechnologie für Glasbeschläge bringt jeden gewünschten Farbton in einmaliger Brillanz auf Ihre Beschlagsversion. Und trotz schneller Lieferzeit achten wir stets darauf, bei der Qualität unserer Produkte keine Kompromisse einzugehen – dafür bürgen wir mit unserem Namen.

Which colour would you like? We can react flexibly to your special wishes and realise them in a very short time, even in large quantities. Modern coating technology for glass fittings provides every desired shade in unique brilliance on your fitting version. And in spite of the quick delivery time, we always take care that no compromises are made with the quality of our products – that is what our name stands for.



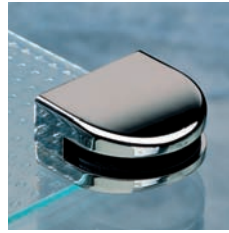
Farben und Beschichtungen für den Innenbereich/colours and surfaces for indoor



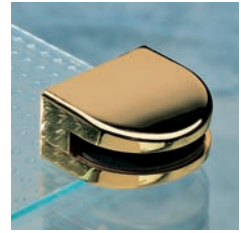
ZN0
Zink roh/
zinc rough



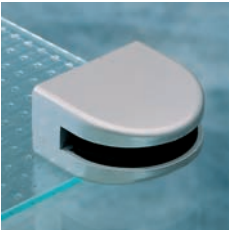
ZN1
Zink geschliffen, poliert,
mattverchromt/ zinc ground, polished,
matt chrome finish
ZN1-K: mit Klarlack/with clear lacquer



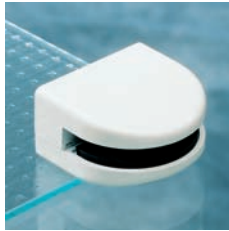
ZN5
Zink geschliffen, poliert,
glanzverchromt/zinc ground, polished,
bright chrome finish



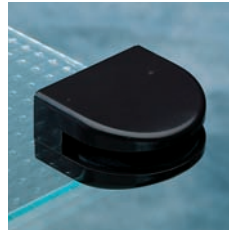
ZN7
Zink geschliffen, poliert,
glanzvergoldet/zinc ground,
polished, bright gold finish



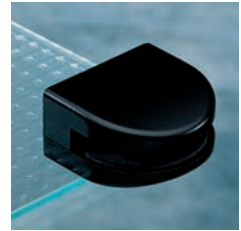
ZN12
Zink alufarbig pulverbeschichtet/
zinc aluminium colour, powder coated



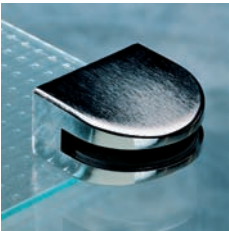
ZN14
Zink weiß RAL 9016
pulverbeschichtet/
zinc white RAL 9016,
powder coated



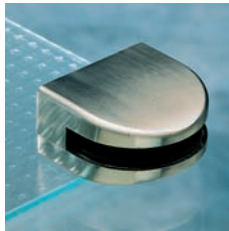
ZN15
Zink braun RAL 8019
pulverbeschichtet/
zinc brown RAL 8019,
powder coated



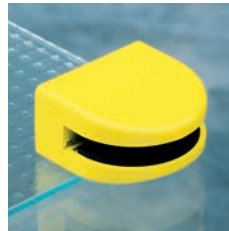
ZN16
Zink schwarz RAL 9005
pulverbeschichtet/
zinc black RAL 9005,
powder coated



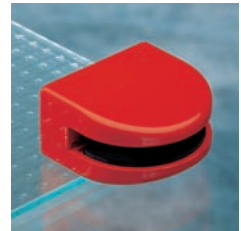
ZN20
Zink geschliffen, mattverchromt
(Edelstahleffekt)/zinc ground, matt
chrome finish (stainless steel effect)
ZN20-K: mit Klarlack/with clear lacquer



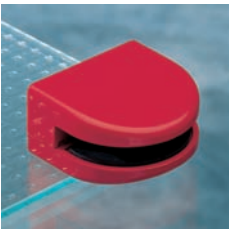
ZN22
Zink Edelstahlfinish/zinc stainless steel
finish (simulated)
ZN22-K: mit Klarlack/with clear lacquer



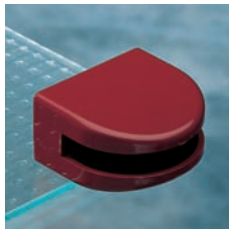
RAL
Zink pulverbeschichtet in RAL-Farben,
z.B. 1016 Schwefelgelb/ zinc powder
coated in RAL colours, e.g. 1016
sulphur yellow



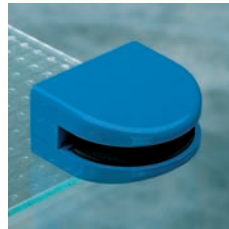
RAL
Zink pulverbeschichtet in RAL-Farben,
z.B. 2002 Blutorange/
zinc powder coated in RAL colours, e.g.
2002 blood orange



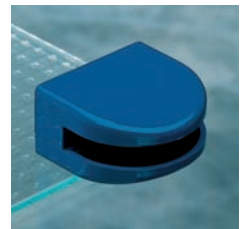
RAL
Zink pulverbeschichtet in RAL-Farben,
z.B. 3027 Himbeerrot/
zinc powder coated in RAL colours, e.g.
3027 raspberry red



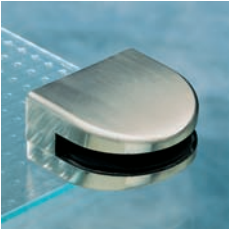
RAL
Zink pulverbeschichtet in RAL-Farben,
z.B. 3004 Purpurrot/
zinc powder coated in RAL colours, e.g.
3004 purple red



RAL
Zink pulverbeschichtet in RAL-Farben,
z.B. 5015 Himmelblau/
zinc powder coated in RAL colours, e.g.
5015 sky blue



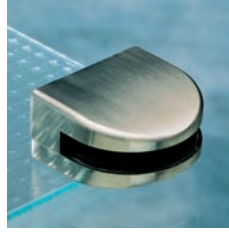
RAL
Zink pulverbeschichtet in RAL-Farben,
z.B. 5002 Ultramarinblau/
zinc powder coated in RAL colours, e.g.
5002 ultramarine blue



VA
Edelstahl matt geschichtet/
stainless steel turned finish



VA1
Edelstahl poliert/
stainless steel polished



VA2
Edelstahl matt gebürstet/
stainless steel matt brushed

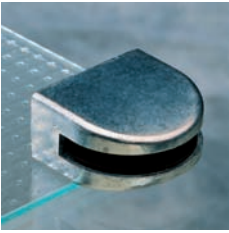
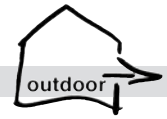


ZN44
Zink Grundkörper Edelstahlfinish (ZN22),
Zink Dreieck geschliffen, mattvermessingt
(ZN2-G)/zinc base stainless steel finish
(simulated) (ZN22), zinc delta insert
ground, matt brass finish (ZN2-G)

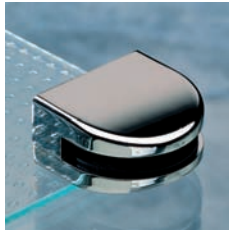


ZN50
Zink Grundkörper Edelstahlfinish (ZN22),
Zink Dreieck glanzverchromt (ZN5)/
zinc base stainless steel finish (simula-
ted) (ZN22), zinc delta insert bright
chrome finish (ZN5)

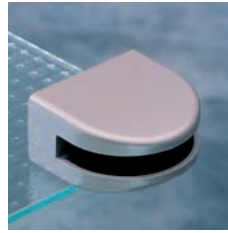
Farben und Beschichtungen für den Außenbereich/colours and surfaces for outdoor



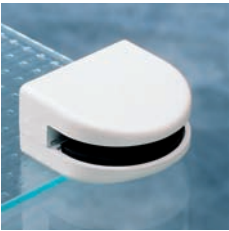
ZNO
Zink roh/
zinc rough



ZN5
Zink geschliffen, poliert, glanzver-
chromt/zinc ground, polished, bright
chrome finish



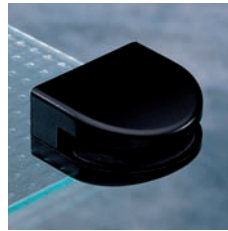
ZN12
Zink alufarbig pulverbeschichtet/
zinc aluminium colour, powder coated



ZN14
Zink weiß RAL 9010 pulverbeschichtet/
zinc white RAL 9010, Powder coated



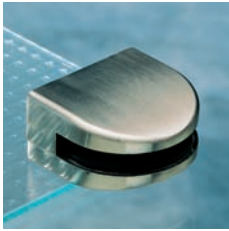
ZN15
Zink braun RAL 8019
pulverbeschichtet/
zinc brown RAL 8019,
powder coated



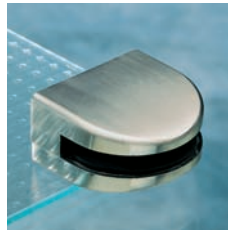
ZN16
Zink schwarz RAL 9005
pulverbeschichtet/
zinc black RAL 9005,
powder coated



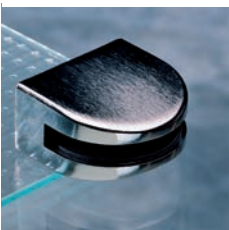
VA1
Edelstahl poliert/
stainless steel polished



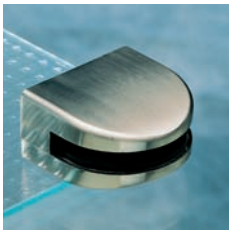
VA2
Edelstahl matt gebürstet/
stainless steel matt brushed



VA
Edelstahl matt geschichtet/
stainless steel turned finish



ZN20-K
Zink geschliffen, mattverchromt
(Edelstahleffekt) mit Klarlack/
zinc ground, matt chrome finish (stain-
less steel effect) with clear lacquer



ZN22-K
Zink Edelstahlfinish mit Klarlack/zinc
stainless steel finish (simulated) with
clear lacquer